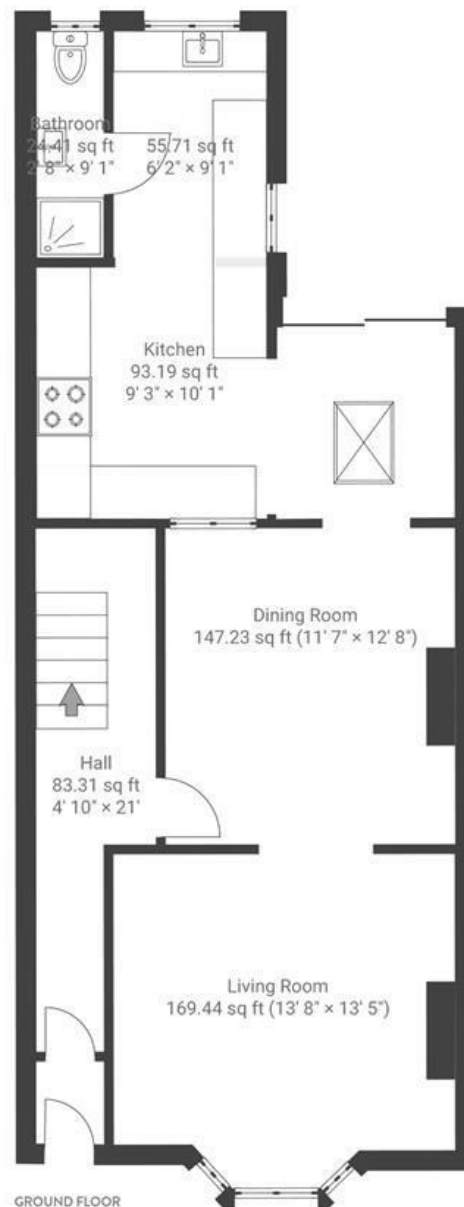


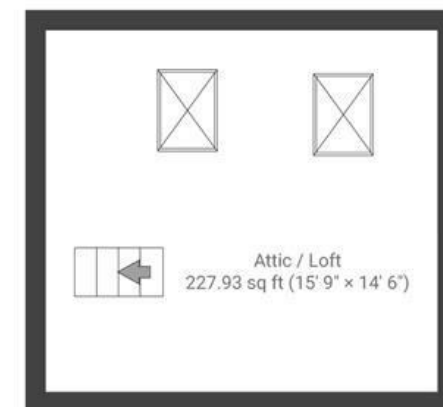
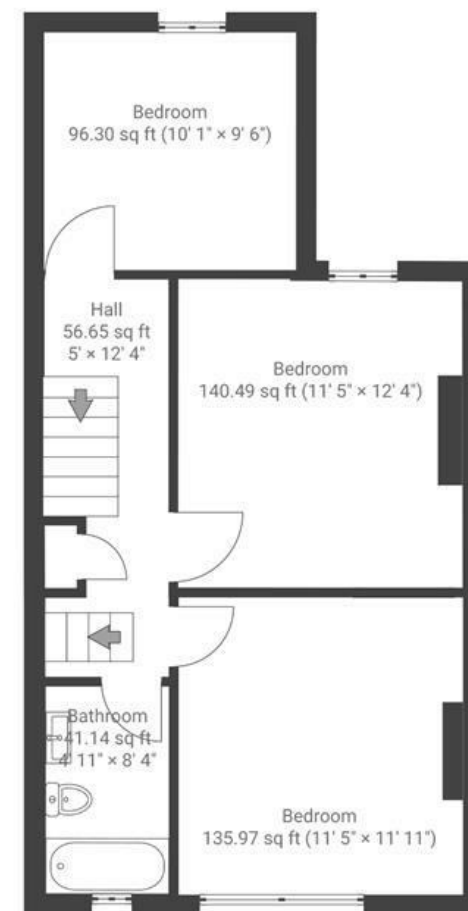
Trelawney Park

BRISLINGTON

APPROXIMATE FLOOR AREA
131 SQM / 1410 SQFT



FIRST FLOOR



Boardwalk

Trelawney Park

, BRISTOL

£

£485,000



BS4 4HD

zzz

3 Bedrooms



2 Bathrooms

"We've truly cherished our time at Trelawney Park! Brislington has been the perfect place to raise our family, offering a wealth of parks, baby groups, play cafes, nurseries, and schools all within easy reach. We love being so close to Nightingale Valley, a stunning spot we visit at least once a week for a family walk. The area also has a fantastic variety of pubs and cafes, and has a wonderful sense of community!"

